

Typography 3

Remember: **TEXT ALIGNMENTS**...

Justified

We hold these truths to be self-evident, that all men are created equal, that they are endowed by their Creator with certain unalienable Rights, that among these are Life, Liberty and the pursuit of Happiness. That to secure these rights, Governments are instituted among Men, deriving their just powers from the consent of the governed. That whenever any Form of Government becomes destructive to these ends, it is the Right of the People to alter or abolish it...

Left Justified

We hold these truths to be self-evident, that all men are created equal, that they are endowed by their Creator with certain unalienable Rights, that among these are Life, Liberty and the pursuit of Happiness. That to secure these rights, Governments are instituted among Men, deriving their just powers from the consent of the governed. That whenever any Form of Government becomes destructive to these ends, it is the Right of the People to alter or abolish it...

We hold these truths to be self-evident, that all men are created equal, that they are endowed by their Creator with certain unalienable Rights, that among these are Life, Liberty and the pursuit of Happiness. That to secure these rights, Governments are instituted among Men, deriving their just powers from the consent of the governed. That whenever any Form of Government becomes destructive to these ends, it is the Right of the People to alter or abolish it...

We hold these truths to be self-evident, that all men are created equal, that they are endowed by their Creator with certain unalienable Rights, that among these are Life, Liberty and the pursuit of Happiness. That to secure these rights, Governments are instituted among Men, deriving their just powers from the consent of the governed. That whenever any Form of Government becomes destructive to these ends, it is the Right of the People to alter or abolish it...

Right Justified

Centered

Indented Paragraph Style

Students with special needs also exhibited a difference in learning (by definition they do), and with some exception, distinctly performed at the bottom end of the rubric scale. Learning differences like dyslexia and attention problems makes it hard for these kids to get the required amount work done in a day and the end results seem to be similar to the ELL work.

Problems with attention and focus issues aside and though the semantic details are often somewhat different, decoding issues for ELL and special needs students leave a similar mark: flat, little stories, lacking in character and plot development. Similarly both groups have trouble understanding and retaining the formal traditional academic language used in language arts, in reality this seems to be a problem with middle and top performers as well.

Developed by experts, technical terms are really meant for experts to communicate amongst themselves, some say they are intended to keep the uninitiated and novices out of the conversation. The technical jargon of the language arts, such as the names of the parts of speech, or terms like simile and metaphor do keep the uninitiated out of the conversation.

- **Do not indent the first paragraph.**
- **Indent the first line of each subsequent paragraph about the width of one capital M (em-space).**
- **No extra space between paragraphs.**
- **Works only with Justified and Left Justified text alignments.**

Justified Paragraph Style

Students with special needs also exhibited a difference in learning (by definition they do), and with some exception, distinctly performed at the bottom end of the rubric scale. Learning differences like dyslexia and attention problems makes it hard for these kids to get the required amount work done in a day and the end results seem to be similar to the ELL work.

Problems with attention and focus issues aside and though the semantic details are often somewhat different, decoding issues for ELL and special needs students leave a similar mark: flat, little stories, lacking in character and plot development. Similarly both groups have trouble understanding and retaining the formal traditional academic language used in language arts, in reality this seems to be a problem with middle and top performers as well.

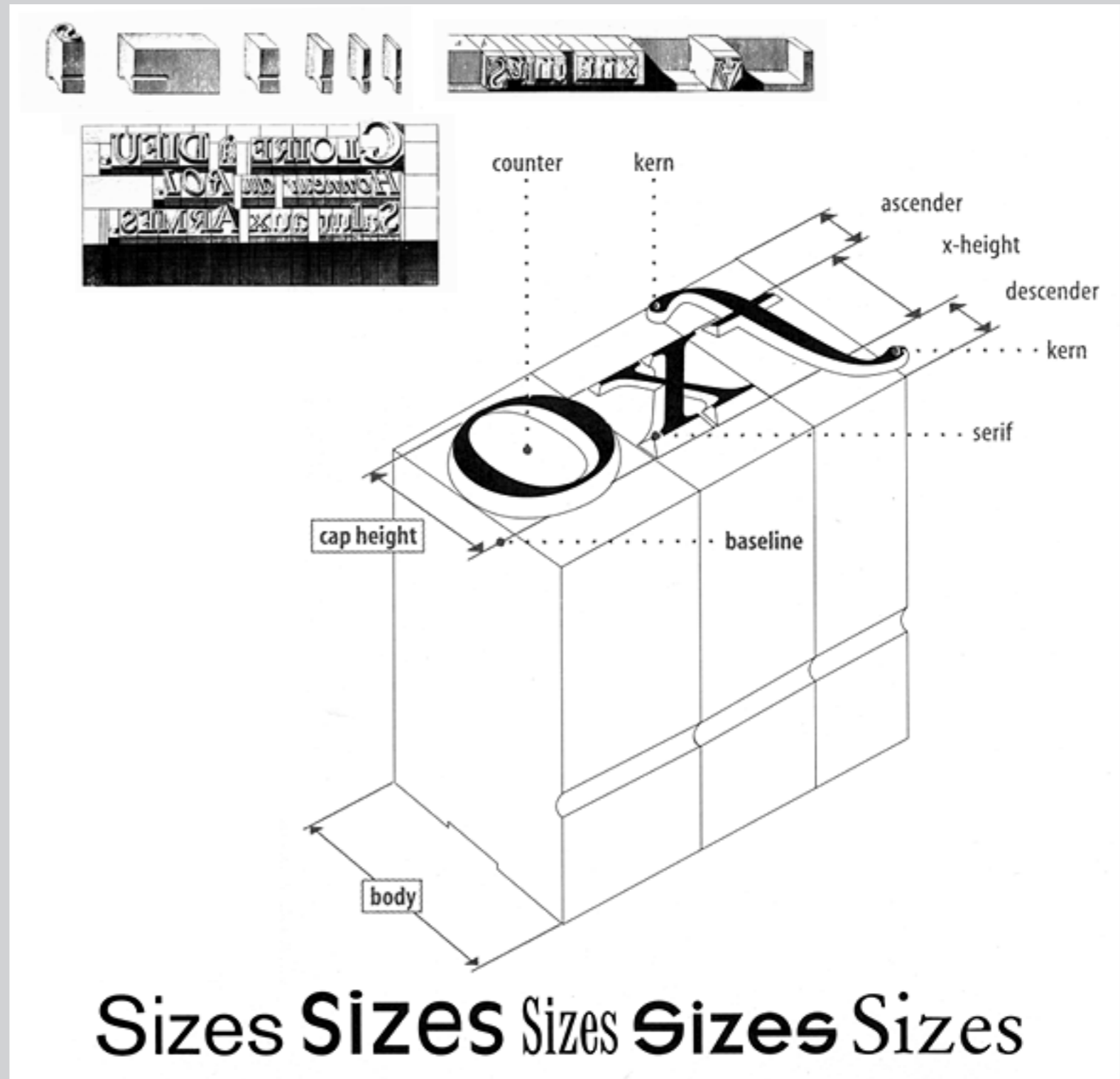
Developed by experts, technical terms are really meant for experts to communicate amongst themselves, some say they are intended to keep the uninitiated and novices out of the conversation. The technical jargon of the language arts, such as the names of the parts of speech, or terms like simile and metaphor do keep the uninitiated out of the conversation.

- **No indent of the first line of each paragraph.**
- **One half of the text point size extra space between paragraphs.**
- **Works with any text alignment.**

Remember...

In the early days of printing presses, type was put together on metal slugs. Sheets of lead were put in between the rows of text to space out the lines.

So, **LEADING** is what we call the spacing between lines of text.



Typical Leading:

Developed by experts, technical terms are really meant for experts to communicate amongst themselves, some say they are intended to keep the uninitiated and novices out of the conversation. The technical jargon of the language arts, such as the names of the parts of speech, or terms like simile and metaphor do keep the uninitiated out of the conversation.

Text with EXTRA Leading:

Developed by experts, technical terms are really meant for experts to communicate amongst themselves, some say they are intended to keep the uninitiated and novices out of the conversation. The technical jargon of the language arts, such as the names of the parts of speech, or terms like simile and metaphor do keep the uninitiated out of the conversation.

Two more things...

- 12pt type is for reading text on a computer monitor. For body text that will be printed, use 10pt type.
- Do not double space after a period – use only one space between sentences.

and...

- Do not underline words, use *italics* or **bold** text to emphasise them.

This is an underlined phrase.

This phrase has a rule drawn under it.

This phrase has an *italic* word.